

COSY COLLECTION



This selection of textiles, which includes a plush mixture of boucles and semi-plains, is visually and sensorially rich, distinguished by tactile surface textures and the depth of the weave.

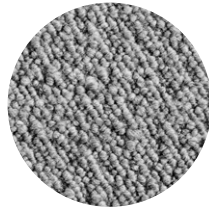
HAY

FLAMIBER

SELECTED COLOURS BY HAY



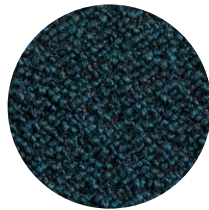
Cream A5



Grey C8



Charcoal C8



Petrol blue J4



Dark blue J4

Collection Cosy

Composition 33% Acrylic, 30% Wool,
29% Cotton, 7% Polyester, 1% Viscose

Width 139 cm / 54.72"

Price group 2

Martindale 120,000

Lightfastness 5-6

FIRE RATINGS

/ CAL117 - US

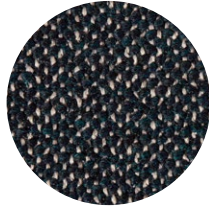
Note: Due to variations in computer screens, we cannot guarantee that the colours shown here are truly representative of our products.

FAIRWAY

SELECTED COLOURS BY HAY



Grey 307-201



Dark blue 308-288

Note: Due to variations in computer screens, we cannot guarantee that the colours shown here are truly representative of our products.

Collection Cosy

Composition 34% Acrylic, 26% Polyester, 22% Wool, 12% Cotton, 2% Viscose, 2% Linen

Width 140 cm / 55.12"

Price group 2

Martindale 60,000

Lightfastness 5

FIRE RATINGS

/ EN 1021 PART 1 AND 2 (CIGARETTE AND MATCH) - EU

/ CAL117 - US

OPTIONAL FIRE RATINGS (WITH FR TREATMENT)

/ BS 5852 PART 1 IGN 0 (CIGARETTE) - UK

BOLGHERI

SELECTED COLOURS BY HAY



LGG60

Note: Due to variations in computer screens, we cannot guarantee that the colours shown here are truly representative of our products.

Collection Cosy

Composition 35% Viscose, 26% Wool, 17% Polyamide, 15% Silk, 7% Linen

Width 140 cm / 55.12"

Price group 3

Martindale 30,000

Lightfastness 5

FIRE RATINGS

/ EN 1021 PART 1 AND 2 (CIGARETTE AND MATCH) – EU

/ BS 5852 PART 1 IGN 0 (CIGARETTE) – UK

/ CAL 117 – US

DOT 1682

SELECTED COLOURS BY HAY



02 Bianco/Nero



03 Anthracite

Note: Due to variations in computer screens, we cannot guarantee that the colours shown here are truly representative of our products.

Collection Cosy

Composition 55% Wool, 45% Cotton

Width 140 cm / 55.12"

Price group 3

Martindale 50,000

Lightfastness 4-5

FIRE RATINGS

/ EN 1021 PART 1 (CIGARETTE AND MATCH) - EU

/ BS 5852 PART 1 IGN 0 AND IGN 1 (CIGARETTE AND MATCH) - UK

/ CAL117 - US

/ NFPA 260 - US

CARE

FABRICS

- / Vacuum the furniture regularly using the upholstery nozzle to remove dust and avoid fluff and pilling.
- / Straighten the fabric with your hands from time to time. Wrinkles in the fabric can be straightened using a steamer.
- / Soak up spilled liquids immediately with an absorbent napkin or cloth by dabbing gently towards the centre of the stain.
- / Never use concentrated detergents or bleach, ammonia, optical brighteners or soap intended for hard surfaces.
- / We do not recommend spot cleaning of individual marks and stains as this damages the fabric and causes colour loss.
- / If the stain persists, consult a specialist cleaner.
- / On wool fabrics, most stains can be removed with lukewarm water on a clean lint-free cloth. If necessary, add a little neutral detergent.
- / Avoid rubbing the material hard as this could result in loss of colour and damage the fabric.
- / It may also be necessary to use a hairdryer to avoid leaving a water outline.
- / If the stain persists consult a specialist cleaner.

HAY