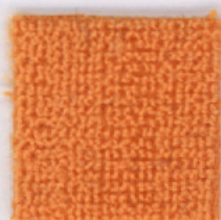
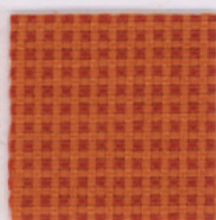


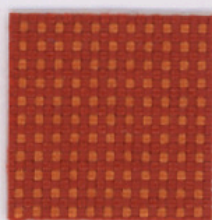
 **Kvadrat for**  **MOROSO**



Satu 440



Pro 511



Pro 521



Divina 623



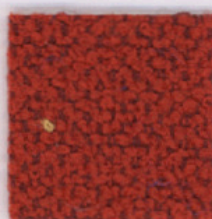
Tonica 611



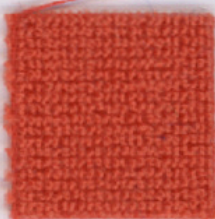
Satu 430



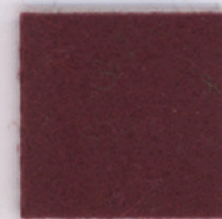
Tonus 125



Coral 550



Satu 550



Divina 671



Divina 462



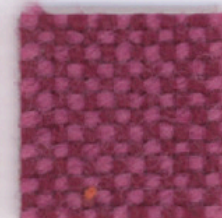
Divina 542



Hallingdal 600



Tonus 130



Hallingdal 553



Tonus 201



Hallingdal 547



Divina 562



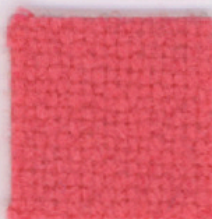
Divina 642



Hallingdal 437



Divina 444



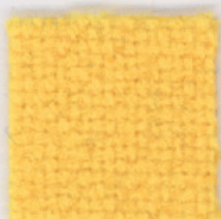
Tonus 127



Tonus 608



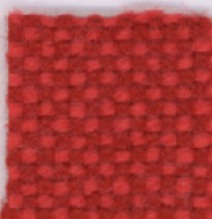
Divina 662



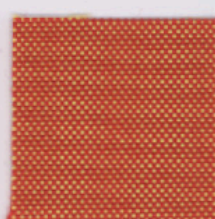
Tonus 124



Tonus 450



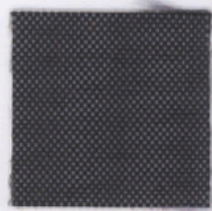
Hallingdal 523



Blitz 544



Divina 692



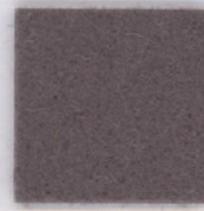
Blitz 184



Tonus 509



Satu 660



Divina 691



Satu 240



Hallingdal 543



Coral 170



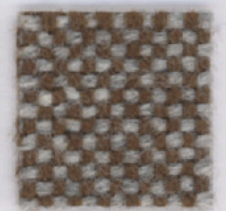
Tonus 211



Divina 724



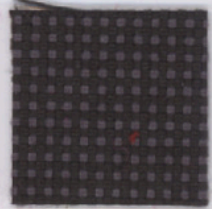
Divina 984



Hallingdal 270



Tonus 636



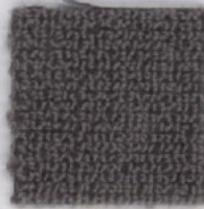
Pro 191



Divina 154



Tonica 272



Satu 150



Divina 334



Tonus 635



Tonica 192



Hallingdal 180



Coral 370



Tonica 231



Tonica 671



Divina 191



Tonus 128



Divina 393



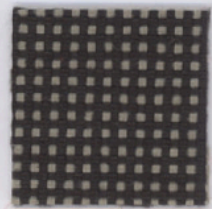
Divina 384



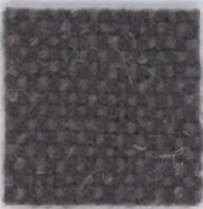
Coral 340



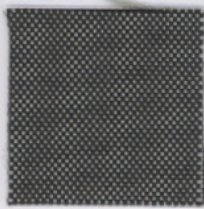
Tonus 640



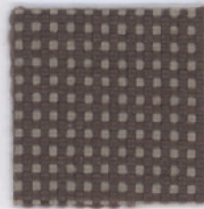
Pro 241



Linie 142



Blitz 984



Pro 341



Linie 442



Coral 240



Tonus 135



Hallingdal 103



Tonus 100



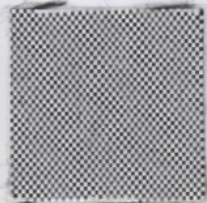
Satu 420



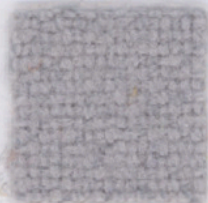
Satu 950



Divina 224



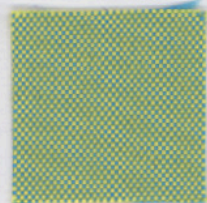
Blitz 124



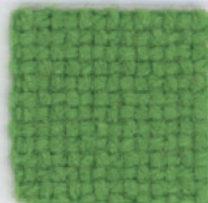
Tonus 614



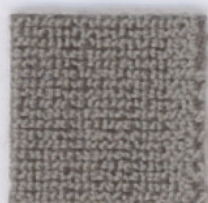
Hallingdal 110



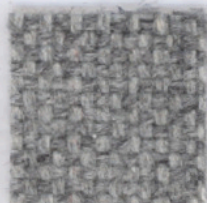
Blitz 844



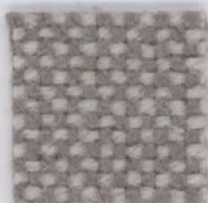
Hallingdal 901



Satu 140



Hallingdal 130



Hallingdal 123



Tonica 111



Tonica 411



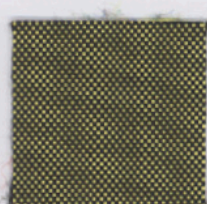
Tonus 240



Divina 171



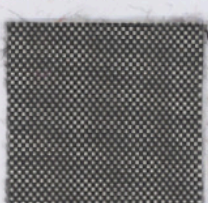
Coral 130



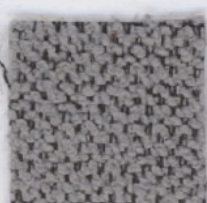
Blitz 484



Tonus 505



Blitz 284



Coral 140



Divina 173



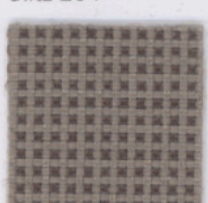
Blitz 244



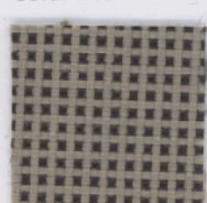
Hallingdal 906



Tonus 118



Pro 331



Pro 231



Divina 214



Satu 210



Tonus 840



Linie 952



Tonica 762



Divina 782



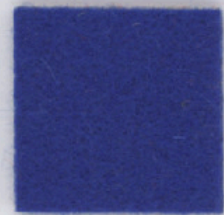
Tonica 752



Tonus 210



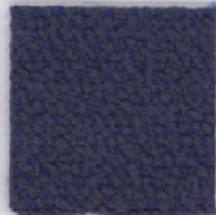
Divina 922



Divina 762



Tonus 633



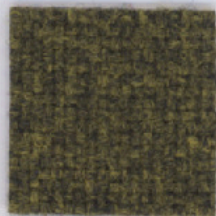
Coral 770



Tonus 132



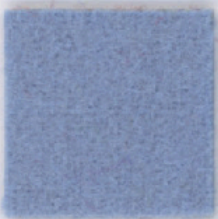
Divina 682



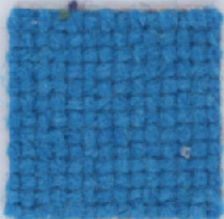
Tonica 412



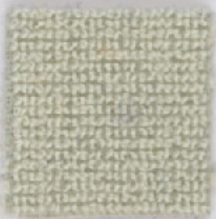
Tonus 980



Divina 712



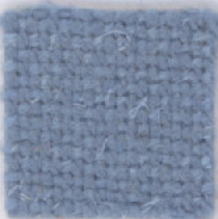
Hallingdal 850



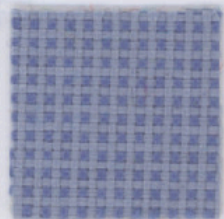
Satu 910



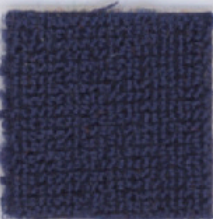
Tonus 940



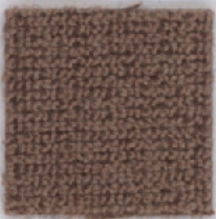
Linie 702



Pro 711



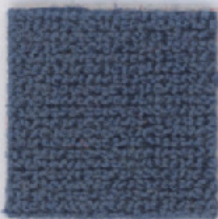
Satu 760



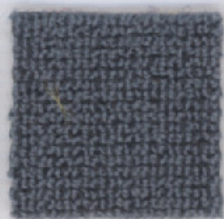
Satu 340



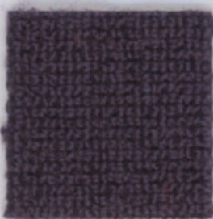
Tonus 380



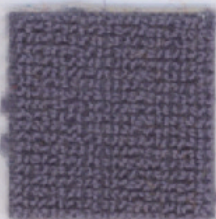
Satu 740



Satu 750





Satu 680






Satu 670



Tonus 634

 **Kvadrat for**  **MOROSO**

<p><b>Design</b> Blitz</p> <p><b>Application</b> Offices, hotels, institutions, domestic use</p> <p><b>Designer</b> Rikke Ladegaard</p> <p><b>Description</b> 100% Trevira CS (polyester) Flourcarbon Width 55 inches (140 cm) Weight app. 350 g/lin.m Yarn dyed Colour differences may occur</p> <p><b>Tests</b> Abrasion: App. 30.000 rubs acc. to the Martindale method EN ISO 12947 : 1999 Lightfastness: (ISO) 6-7 Pilling: (EN ISO) 4-5 Fastness to rubbing (ISO): dry 5, wet 4-5 Flame resistance: EN 1021-1/2 ignition source 0-1 when covering flame retardant foam density min. 35 kg/m<sup>3</sup> BS 5852 ignition source 2-5 when covering flame-retardant foam density min. 35 kg/m<sup>3</sup> DIN 4102 B1 French Standard M1 FAR 25.853 California Tech. Bulletin No. 117, Sec. E IMO A.652 (16) (Copy of test report available)</p> <p><b>Care</b> Please see the ISO symbols Shrinkage app. 2% when washed at 60°C </p>	<p><b>Cat. S</b></p>	<p><b>Design</b> Coral</p> <p><b>Application</b> Offices, hotels, institutions, domestic use</p> <p><b>Designer</b> Frans Dijkmeijer</p> <p><b>Description</b> 100% Trevira CS (polyester) Width 55 inches (140 cm) Weight app. 580 g/lin.m Yarn dyed Colour differences may occur</p> <p><b>Tests</b> Abrasion: App. 45.000 rubs acc. to the Martindale method EN ISO 12947 : 1999 Lightfastness: (ISO) 5-7 Pilling: (EN ISO) 4-5 Fastness to rubbing (ISO): dry 5, wet 4-5 Flame resistance: EN 1021-1/2 ignition source 0-1 when covering flame retardant foam density min. 35 kg/m<sup>3</sup> BS 5852 ignition source 2-5 when covering flame-retardant foam density min. 35 kg/m<sup>3</sup> DIN 4102 B1 French Standard M1 FAR 25.853 California Tech. Bulletin No. 117, Sec. E IMO A.652 (16) (Copy of test report available)</p> <p><b>Care</b> Please see the ISO symbols Shrinkage app. 2% when washed at 60°C </p>	<p><b>Cat. W</b></p>	<p><b>Design</b> Divina</p> <p><b>Application</b> Upholstery for both domestic and public decoration</p> <p><b>Designer</b> Finn Sködt</p> <p><b>Description</b> 100% new wool Width 59 inches (150 cm) Weight app. 820 g/lin.m Piece dyed Colour differences may occur</p> <p><b>Tests</b> Abrasion: App. 45.000 rubs acc. to the Martindale method EN ISO 12947 : 1999 Lightfastness: (ISO) min. 5 Pilling: (SN) 5 Fastness to rubbing (ISO): dry 4-5, wet 4-5 Flame resistance: EN 1021-1/2 ignition source 0-1 when covering flame retardant foam density min. 35 kg/m<sup>3</sup> BS 5852 ignition source 2-5 when covering flame retardant foam density min. 35 kg/m<sup>3</sup> DIN 4102 B2 M2 when flame protected California Tech. Bulletin No. 117, Sec. E IMO A.652 (16)</p> <p><b>Care</b> Dry cleaning or cleaning with foam detergents</p>	<p><b>Cat. W</b></p>	<p><b>Design</b> Hallingdal</p> <p><b>Application</b> Upholstery for both domestic and public decoration</p> <p><b>Designer</b> Nanna Ditzel</p> <p><b>Description</b> 70% new wool/30% viscose Width 51 inches (130 cm) Weight app. 795 g/lin.m Material dyed Colour differences may occur</p> <p><b>Tests</b> Abrasion: App. 100.000 rubs acc. to the Martindale method EN ISO 12947 : 1999 Lightfastness: (ISO) 5-7 Pilling: (SN) 5 Fastness to rubbing (ISO): dry 4-5, wet 4-5 Flame resistance: EN 1021-1/2 ignition source 0-1 when covering flame retardant foam density min. 35 kg/m<sup>3</sup> BS 5852 ignition source 2-5 when covering flame retardant foam density min. 35 kg/m<sup>3</sup> DIN 4102 B2 M2 when flame protected California Tech. Bulletin No. 117, Sec. E IMO A.652 (16)</p> <p><b>Care</b> Dry cleaning or cleaning with foam detergents</p>	<p><b>Cat. W</b></p>	<p><b>Design</b> Linie 2</p> <p><b>Application</b> Offices, hotels, institutions, domestic use</p> <p><b>Designer</b> Hanne Vedel</p> <p><b>Description</b> 95% new wool/5% nylon Width 55 inches (140 cm) Weight app. 630 g/lin.m Yarn dyed Colour differences may occur</p> <p><b>Tests</b> Abrasion: App. 75.000 rubs acc. to the Martindale method EN ISO 12947 : 1999 Lightfastness: (ISO) 5-6 Pilling: (SN) 5 Fastness to rubbing (ISO): dry 4, wet 4 Flame resistance: EN 1021-1/2 ignition source 0-1 when covering flame retardant foam density min. 35 kg/m<sup>3</sup> BS 5852 ignition source 2-3 when covering flame retardant foam density min. 35 kg/m<sup>3</sup> M2 when flame protected California Tech. Bulletin No. 117, Sec. E IMO A.652 (16) (Copy of test report available)</p> <p><b>Care</b> Dry cleaning or cleaning with foam detergents</p>	<p><b>Cat. W</b></p>
<p><b>Design</b> Pro</p> <p><b>Application</b> Offices, hotels, institutions, domestic use</p> <p><b>Designer</b> Finn Sködt</p> <p><b>Description</b> 100% Trevira CS (polyester) Width 59 inches (150 cm) Weight app. 510 g/lin.m Yarn dyed Colour differences may occur</p> <p><b>Tests</b> Abrasion: App. 80.000 rubs acc. to the Martindale method EN ISO 12947 : 1999 Lightfastness: (ISO) 6-7 Pilling: (EN ISO) 4-5 Fastness to rubbing (ISO): dry 5, wet 4-5 Flame resistance: EN 1021-1/2 ignition source 0-1 when covering flame retardant foam density min. 35 kg/m<sup>3</sup> BS 5852 ignition source 2-5 when covering flame retardant foam density min. 35 kg/m<sup>3</sup> DIN 4102 B1 French Standard M1 FAR 25.853 California Tech. Bulletin No. 117, Sec. E IMO A.652 (16) (Copy of test report available)</p> <p><b>Care</b> Please see the ISO symbols Shrinkage app. 2% when washed at 60°C </p>	<p><b>Cat. W</b></p>	<p><b>Design</b> Satu</p> <p><b>Application</b> Offices, hotels, institutions, domestic use</p> <p><b>Designer</b> Satu Montanari</p> <p><b>Description</b> 58% new wool/25% cotton/ 17% nylon Width 55 inches (140 cm) Weight app. 790 g/lin.m Piece dyed Colour differences may occur</p> <p><b>Tests</b> Abrasion: App. 100.000 rubs acc. to the Martindale method EN ISO 12947 : 1999 Lightfastness: (ISO) 5-6 Pilling: (SN) 4-5 Fastness to rubbing (ISO): dry 4, wet 4 Flame resistance: EN 1021-1/2 ignition source 0-1 when covering flame retardant foam density min. 35 kg/m<sup>3</sup> BS 5852 ignition source 2-5 when covering flame-retardant foam density min. 35 kg/m<sup>3</sup> DIN 4102 B2 M2 when flame protected California Tech. Bulletin No. 117, Sec. E IMO A.652 (16) (Copy of test report available)</p> <p><b>Care</b> Dry cleaning or cleaning with foam detergents</p>	<p><b>Cat. T</b></p>	<p><b>Design</b> Tonica</p> <p><b>Application</b> Upholstery for both domestic and public decoration</p> <p><b>Designer</b> Georgina Wright</p> <p><b>Description</b> 100% new wool Width 55 inches (140 cm) Weight app. 700 g/lin.m Material dyed Colour differences may occur</p> <p><b>Tests</b> Abrasion: App. 45.000 rubs acc. to the Martindale method EN ISO 12947 : 1999 Lightfastness: (ISO) 5-7 Pilling: (EN ISO) 4-5 Fastness to rubbing (ISO): dry 4, wet 4 Flame resistance: EN 1021-1/2 ignition source 0-1 when covering flame retardant foam density min. 35 kg/m<sup>3</sup> BS 5852 ignition source 2-4 when covering flame retardant foam density min. 35 kg/m<sup>3</sup> DIN 4102 B2 M2 when flame protected California Tech. Bulletin No. 117, Sec. E IMO A.652 (16)</p> <p><b>Care</b> Dry cleaning or cleaning with foam detergents</p>	<p><b>Cat. W</b></p>	<p><b>Design</b> Tonus 3</p> <p><b>Application</b> Upholstery for both domestic and public decoration</p> <p><b>Designer</b> Nina Koppel</p> <p><b>Description</b> 90% new wool/10% Helanca Width 51 inches (130 cm) Weight app. 635 g/lin.m Piece dyed Colour differences may occur</p> <p><b>Tests</b> Abrasion: App. 50.000 rubs acc. to the Martindale method EN ISO 12947 : 1999 Lightfastness: (ISO) 5-6 Pilling: (SN) 5 Fastness to rubbing (ISO): dry 4-5, wet 4-5 Flame resistance: EN 1021-1/2 ignition source 0-1 when covering flame retardant foam density min. 35 kg/m<sup>3</sup> BS 5852 ignition source 2-3 when covering flame retardant foam density min. 35 kg/m<sup>3</sup> Crib 5, B2 and M2 when flame protected California Tech. Bulletin No. 117, Sec. E IMO A.652 (16)</p> <p><b>Care</b> Dry cleaning or cleaning with foam detergents</p>	<p><b>Cat. S</b></p>		